



IMPORTANT information!

TODAY YOUR LAWN WAS TREATED WITH...

Today we applied granular fertilizer with 50% slow release nitrogen and sulfate of potash. This product will not work until it is watered into the ground. It can lay on the ground from one day to one month and will not harm anything or burn the grass. If your lawn is dormant at the time of this application, it will green-up quicker and healthier this fall because of this treatment. We spot treated any broadleaf weeds that are present. This time of the year it is not uncommon for weeds to take up to a month to die from this application, because of the heat. If there is any break through of crabgrass, goose grass, or foxtail in your lawn we also treated them.

NEWS FROM LES:

Its hard to believe that this year is half over already. It doesn't seem like it was that long ago when we were waist deep in snow.

This Season started out normal until it got a little dry in May in some of our service areas. We had several calls where some areas in lawns looked liked they were dormant, over sprayed, or burnt. I couldn't identify the problem until I asked I.S.U and they received several samples from different locations in central and western Iowa. They identified the problem as Ascochyta Leaf Blight. With all the rain in June, the problem areas greened up. Hopefully we keep getting some rains in July and August.

Thank you for your business and please call if you have any lawn or landscape concerns.

Les Wilshusen

CORE AERATION: BREATHE LIFE INTO YOUR ROOTS!

Over time your soil naturally becomes compacted, leaving the subsoil undesirable for healthy lawn growth. Walking, playing, mowing, and watering compact particles and reduce the air space necessary for root growth. Compaction is greatest in the upper 1 to 1.5 inches of soil and needs to be relieved by mechanical aeration. This mechanical process plugs 2-3 inch deep, finger size holes into the soil to improve the air, water, and nutrient exchange with your roots.



QUESTION OF THE MONTH

Earwigs are damaging plants in my garden and even getting in my home.. How can I control them?

Earwigs are a common insect in Iowa. The common earwig is about 5/8 inch long and is dark brown with a reddish head and pale yellow-brown legs. Its most distinctive feature is there pincers or forceps on the end of the abdomen.

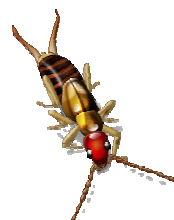
Earwigs are typically found in damp areas, such as under mulches, dead leaves, logs, and piles of firewood. They mainly feed on moist, decaying plant materials, but they also occasionally feed on vegetables and ornamental plants in the garden.

Up until last year, we saw very few earwigs. Last summer it seemed they really multiplied with all the rain. We even found them in mailboxes. Earwigs can be easily controlled with an insecticide. Spray the ground around plants, but also mulch areas and any other hiding places. There maybe 1000's of them so more than one spray application would be recommended.

IF YOU WOULD LIKETO HAVE THE OUTSIDE OF YOUR HOUSE PROFESSIONALLY DONE GIVE US A CALL AND WE WOULD BE HAPPY TO DO THIS SERVICE FOR YOU.

LAWN CARE TIPS...

- Keep mower blade set at 3" high thru Mid September
- Control any weeds in perennial/shrub areas by spot spraying them with round up
- Perennials like a drink of water at least once a week
- If you want you lawn to stay green throughout the summer, water lawn 1-1 1/2" weekly
- Pinching off faded blooms on annuals and perennials brings new growth and new flowers, because you keep the energy from going into creating seeds.
- If turf areas are thin or bare, mid August thru September is the prime time for seeding.



425 East Fifth • Storm Lake, Iowa 50588
712-732-2395 • 800-261-1244
www.mikeslawnservice.com